



NUTRI-BLENDER BN450ANZ | Owner's Guide



IMPORTANT SAFETY INSTRUCTIONS

PLEASE READ ALL INSTRUCTIONS BEFORE USE • FOR HOUSEHOLD USE ONLY

	Read and review instructions for operation and use.
	Indicates the presence of a hazard that can cause personal injury, death or substantial property damage if the warning included with this symbol is ignored.
	For indoor and household use only.
When using electrical appliances, basic safety precautions should always be followed, including the following:	

⚠ WARNING: To reduce the risk of injury, fire, electrical shock or property damage, basic safety precautions must always be followed, including the following numbered warnings and subsequent instructions. Do not use appliance for other than intended use.

⚠ WARNING: Handle the Pro Extractor Blades™ Assembly with care, as the blades are loose and sharp.

⚠ WARNING: Remove utensils prior to processing. Failure to remove may cause the Ninja Cup to be damaged or to shatter, which may cause personal injury.

⚠ WARNING: Do not blend hot, effervescent, or carbonated liquids. Doing so may cause excessive pressure buildup, resulting in risk of laceration and or the user being burned.

⚠ WARNING: Remove the Pro Extractor Blades Assembly from the Ninja cup upon completion of blending. Do not store ingredients before or after blending them in the cup with the blade assembly attached. Some foods may contain active ingredients or release gases that will expand if left in a sealed container, resulting in excessive pressure buildup that can pose a risk of injury.

- 1 Read all instructions prior to using the appliance and its accessories.
- 2 Carefully observe and follow all warnings and instructions. This unit contains electrical connections and moving parts that potentially present risk to the user.
- 3 **ALWAYS** exercise care when handling the Pro Extractor Blades Assembly. The blades are loose and sharp, handle carefully. **ONLY** grasp the Pro Extractor Blades Assembly by the outer perimeter of the blade assembly base. Failure to use care when handling the blade assembly will result in a risk of laceration.
- 4 Take your time and exercise care during unpacking and appliance setup. This appliance contains sharp, loose blades that can cause injury if mishandled.
- 5 Take inventory of all contents to ensure you have all parts needed to properly and safely operate your appliance.
- 6 **DO NOT** blend hot liquids. Doing so may result in pressure buildup and steam exposure that can pose a risk of the user being burned.
- 7 Blades are sharp. Handle carefully.
- 8 Unplug the appliance from the outlet when not in use, before assembling or disassembling parts, and before cleaning. To unplug, grasp the plug by the body and pull from the outlet. **NEVER** unplug by grasping and pulling the flexible cord.
- 9 Before use, wash all parts that may contact food. Follow washing instructions covered in this instruction manual.
- 10 To protect against the risk of electric shock, **DO NOT** submerge the appliance or allow the power cord to contact any form of liquid.
- 11 **DO NOT** use this appliance outdoors. It is designed for indoor household use only.
- 12 This appliance has important markings on the plug blade. The attachment plug or entire cordset (if plug is molded onto cord) is not suitable for replacement. If damaged, the appliance shall be replaced.

IMPORTANT SAFETY INSTRUCTIONS

PLEASE READ ALL INSTRUCTIONS BEFORE USE • FOR HOUSEHOLD USE ONLY

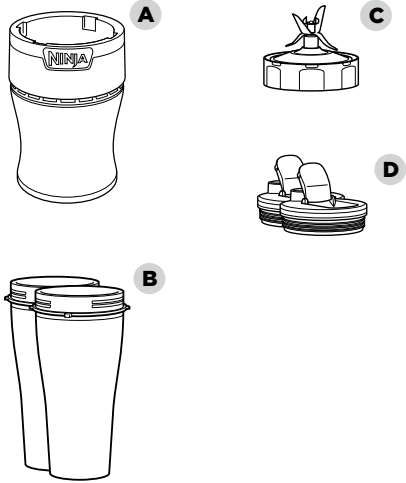
- 14 DO NOT** operate any appliance with a damaged cord or plug, or after the appliance malfunctions or is dropped or damaged in any manner. This appliance has no user-serviceable parts. If damaged, contact SharkNinja for servicing.
- 15** Extension cords should **NOT** be used with this appliance.
- 16 DO NOT** allow children to operate this appliance or use as a toy. Close supervision is necessary when any appliance is used near children.
- 17** This appliance is **NOT** intended to be used by people with reduced physical, sensory, or mental capabilities, or lack of experience and knowledge, unless they have been given supervision or instruction concerning use of the appliance by a person responsible for their safety.
- 18** Before each use, inspect blade assembly for damage. If a blade is bent or damage is suspected, contact SharkNinja to arrange for replacement.
- 19 DO NOT** attempt to sharpen blades.
- 20 DO NOT** allow the unit or the cord to hang over the edges of tables or counters. The cord may become snagged and pull the appliance off the work surface.
- 21 DO NOT** allow any part of the unit to contact hot surfaces, including stoves and other heating appliances.
- 22 ALWAYS** use the appliance on a dry and level surface.
- 23 NEVER** place a blade assembly on the power pod without it first being attached to the cup.
- 24** Keep hands, hair, and clothing out of the container when loading and operating
- 25 ONLY** use attachments and accessories that are provided with the product or are recommended by SharkNinja. The use of attachments including canning jars not recommended or sold by SharkNinja may cause fire, electric shock, or injury.
- 26** During operation and handling of the appliance, avoid contact with moving parts.
- 27 DO NOT** operate the appliance with an empty container.
- 28 DO NOT** fill containers past the **MAX FILL** or **MAX LIQUID** lines.
- 29 DO NOT** microwave any containers or accessories provided with the appliance.
- 30 DO NOT** perform grinding operations.
- 31** Before operation, ensure all utensils are removed from containers. Failure to remove utensils can cause containers to shatter and potentially result in personal injury and property damage.
- 32 NEVER** operate the appliance without lids and caps in place. **DO NOT** attempt to defeat the interlock mechanism. Ensure the container and lid are properly installed before operation.
- 33 DO NOT** expose the containers and accessories to extreme temperature changes. They may experience damage.
- 34 NEVER** leave the appliance unattended while in use.
- 35** If you find unmixed ingredients sticking to the sides of the cup, stop the appliance, remove the blade assembly, and use a scraper to dislodge ingredients.
- 36 DO NOT** attempt to remove the container and lids from the power pod while the blade assembly is still spinning. Allow the appliance to come to a complete stop before removing lid and container.
- 37** Remove the Pro Extractor Blades™ Assembly from the Ninja® Cup upon completion of blending. **DO NOT** store ingredients before or after blending them in the cup with the blade assembly attached. Some foods may contain active ingredients or release gases that will expand if left in a sealed container, resulting in excessive pressure buildup that can pose a risk of injury. For ingredient storage in the cup, use only Spout Lid to cover.
- 38** If the appliance overheats, a thermal switch will activate and temporarily disable the motor. To reset, unplug the appliance and allow it to cool for approximately 15 minutes before using again.
- 39** The maximum wattage rating for this appliance is based on the configuration of the Pro Extractor Blades Assembly and Ninja Cup. Other configurations may draw less power or current.
- 40 DO NOT** process dry ingredients without adding liquid to the cup. It is not intended for dry blending.
- 41** To protect against risk of electrical shock, **DO NOT** immerse the power pod in water or other liquid. Unplug the power pod before cleaning.
- 42** The maximum wattage rating for this appliance is achieved by blending 220 g dry soybean + 20 g water. Operating time should be 15 seconds, off for 2 minutes, then blend 3 cycles.

SAVE THESE INSTRUCTIONS

PARTS

- A Power Pod
- B Ninja® Cup (x2)
- C Pro Extractor Blades™ Assembly
- D Spout Lid (x2)

NOTE: Number and size of cups and type of lids available vary by model.



BEFORE FIRST USE

IMPORTANT: Review all warnings at the beginning of this Owner's Guide before proceeding.

⚠WARNING: Handle the Pro Extractor Blades Assembly with care, as the blades are loose and sharp.

⚠WARNING: Remove utensils prior to processing. Failure to remove may cause the Ninja Cup to be damaged or to shatter, which may cause personal injury.

⚠WARNING: Do not blend hot, effervescent, or carbonated liquids. Doing so may cause excessive pressure buildup, resulting in risk of laceration and or the user being burned.

⚠WARNING: Remove the Pro Extractor Blades Assembly from the Ninja cup upon completion of blending. Do not store ingredients before or after blending them in the cup with the blade assembly attached. Some foods may contain active ingredients or release gases that will expand if left in a sealed container, resulting in excessive pressure buildup that can pose a risk of injury.

DID YOU KNOW?

- You can take your drinks on the go using the Spout Lids or Storage Lid.
- The containers, lids, and blade assembly are BPA free.

NOTE:

- Handle the Pro Extractor Blades Assembly by grasping around the perimeter of the blade assembly base.
- Accessories are top-rack dishwasher safe and should **NOT** be cleaned with a heated dry cycle. Ensure blade assembly and lids are removed from their containers before placing in the dishwasher. Exercise care when handling blade assembly.

- 1 Remove all packaging materials from the appliance. Exercise care when unpacking blade assembly, as the blades are sharp.
- 2 Wash containers, lids, and blade assembly in warm, soapy, water using a dishwashing utensil with a handle to avoid direct contact with the blades. Exercise care when handling blade assembly, as the blades are sharp.
- 3 Thoroughly rinse and air-dry all parts.

USING THE NINJA NUTRI-BLENDER

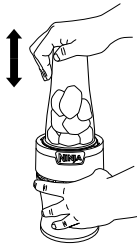
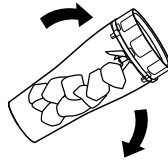
IMPORTANT: Review all warnings at the beginning of this Owner's Guide before proceeding.

- 1 Plug in power pod and place on a clean, dry, level surface such as a countertop or table.
- 2 Add ingredients to the Ninja Cup. **DO NOT** add ingredients past the **MAX LIQUID** line on the cup.



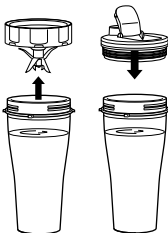
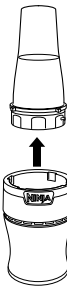
- 3 Place the Blade Assembly on the top of the cup and turn clockwise to seal.

- 4 Turn cup upside down so the bottom of the blade assembly is flat on the worktop.



- 5 Place the cup on the power pod. Press down on the cup to pulse or blend.

- 6 When blending is complete, lift up the cup to remove.



- 7 Turn cup over so blade assembly is on top. Twist blade assembly counterclockwise to remove. To take your blended contents on the go, place the spout lid on cup and turn clockwise to seal. Do not store with the blades attached.

CARE & MAINTENANCE

CLEANING

- 1 Separate all parts.
- 2 Wash all containers in warm, soapy water with a soft cloth.

Hand-Washing

Wash cups, lids, and blade assembly in warm, soapy water. Use a dishwashing utensil with a handle to avoid direct contact with the blades. Exercise care when handling the blade assembly as the blades are sharp. Thoroughly rinse and air-dry all parts.

Dishwasher

Accessories are top-rack dishwasher safe and should **NOT** be cleaned with a heated dry cycle. Ensure the blade assembly and lid are removed from the cup before placing in the dishwasher.

Power Pod

Unplug the power pod before cleaning. Wipe power pod with a clean, damp cloth.

NEVER directly spray the pod with water or other liquids.

DO NOT use abrasive cloths/pads/brushes to clean the pod, as this can dull or scratch the surface.

RESETTING THE MOTOR THERMOSTAT

This unit features a unique safety system that prevents damage to the motor and drive system should you inadvertently overload it. If the unit is overloaded, the motor will be temporarily disabled. Should this occur, follow the reset procedure below.

- 1 Unplug the power pod.
- 2 Allow the power pod to cool for approximately 15 minutes.
- 3 Remove the blade assembly. Empty the container and ensure no ingredients are jamming the blade assembly.

IMPORTANT: Ensure that maximum capacities are not exceeded. This is the most typical cause of appliance overload.

ORDERING REPLACEMENT PARTS

To order additional parts and accessories, visit **AU** ninjakitchen.com.au **NZ** ninjakitchen.co.nz

TROUBLESHOOTING GUIDE

⚠WARNING: To reduce the risk of shock and unintended operation, turn power off and unplug unit before troubleshooting.

Motor Doesn't Start or Blade Assembly Doesn't Rotate.

- Check that the power pod is clean and there is no food blocking connection when placing on containers.
- There is too much food in the container. Remove some ingredients to be below the maximum liquid line and try blending again.
- The unit has overheated. Unplug and wait approximately 15 minutes before using again.
- Check that the plug is securely inserted into the electrical outlet or try another outlet.

Food is Unevenly Chopped.

Either there is too much food in the container, or the pieces are too big. Try cutting the food into smaller pieces of even size and processing smaller amounts per batch.

Food is Chopped Too Fine or is Too Watery.

The food has been over processed. Use brief pulses or process for shorter time. Let the Pro Extractor Blades Assembly come to a complete stop between pulses.

You Cannot Achieve Snow From Solid Ice.

Do not use ice that has been sitting out or has started to melt. Be sure to use short pulses in the beginning to break up large pieces.

ONE (1) YEAR LIMITED REPLACEMENT WARRANTY

The warranty commences on the date of purchase and expires at the end of the 1 year period. In the unlikely event of a defect due to faulty materials or workmanship within the guarantee period we will replace the defective/faulty part with a new product, free of charge, or if the unit is deemed defective/faulty we replace the unit with an equivalent or upgraded model, at our discretion.

For warranty claims, you will need to submit a proof of purchase in the form of a valid receipt that displays date and place of purchase.

Replacement items will be covered by the limited warranty for the balance of the warranty period from the date of the original purchase. Please note:

Your warranty is subject to the following conditions:

- **DO NOT** operate the appliance with a damaged plug or cord, or if the unit has been dropped, damaged or dropped in water.
- To avoid the risk of electric shock, do not disassemble or attempt to repair the appliance on your own. If the supply cord is damaged, it must be replaced by a qualified electrician to avoid a hazard. Incorrect re-assembly or repair can cause a risk of electric shock or injury to persons when the appliance is used.
- The item has not been misused, abused, neglected, altered, modified or repaired by anyone.
- The item has been subjected to fair wear and tear.
- The item has not been used for trade, professional or hire purposes.
- The item has not sustained damage through foreign objects, substances or accident
- Accidental damage
- Damage as a result of use not in accordance with the rating plate
- Use of parts and accessories that are not genuine Ninja components

Customer costs within warranty

- The customer is responsible for any inwards freight charge to return a product for warranty if requested, and outward freight charge for warranty parts and or replacement unit.

Who is covered?

- This warranty applies only to the original purchaser, who bought the product from an authorised retailer and may not be transferred. Proof of purchase is required.

What is not covered?

- Accessories supplied with the item.
- Components that are subject to natural wear and tear caused by normal use in accordance with operating instructions.
- Unauthorised/improper maintenance/handling or overload is excluded from this warranty.

VISIT US ONLINE AT:

AU ninjakitchen.com.au

NZ ninjakitchen.co.nz

Or follow us on any of our social media pages:



AU @ninjakitchenau

NZ @ninjakitchennz

RECORD THIS INFORMATION

Model Number: _____

Serial Number: _____

Date of Purchase: _____
(Keep receipt)

Store of Purchase: _____

TECHNICAL SPECIFICATIONS

Voltage: 220-240V~, 50-60Hz

Power: 900 Watts

Ninja Cup

Capacity: 20 oz. (591 ml)

Proudly distributed by
Mann&Noble Pty Ltd
Building D, 33 Quarry Road
Erskine Park NSW, Australia, 2759
AU 02 8801 7666 | NZ 0800 112 660
[AU ninjakitchen.com.au](http://ninjakitchen.com.au) | [NZ ninjakitchen.co.nz](http://ninjakitchen.co.nz)

Illustrations may differ from actual product. We are constantly striving to improve our products, therefore the specifications contained herein are subject to change without notice.

NINJA is a registered trademark of SharkNinja Operating LLC.

PRO EXTRACTOR BLADES is a trademark of SharkNinja Operating LLC.

© 2022 SharkNinja Operating LLC

BN450ANZ_IB_MP_Mv10_221104

