

# NINJA™

## BN650SM

### INSTRUCTIONS

## PROFESSIONAL FOOD PROCESSOR



[www.ninjakitchen.sg](http://www.ninjakitchen.sg) | [ninjakitchen.my](http://ninjakitchen.my)

# THANK YOU

for purchasing the Ninja™ Professional Food Processor

## REGISTER YOUR PURCHASE

 ninjakitchen.sg | ninjakitchen.my

 SG +65 800 120 5111 | MY +60 1800 803 915

## RECORD THIS INFORMATION

Model Number: \_\_\_\_\_

Serial Number: \_\_\_\_\_

Date of Purchase: \_\_\_\_\_  
(Keep receipt)

Store of Purchase: \_\_\_\_\_

## TECHNICAL SPECIFICATIONS

Voltage: 220V-240V- 50-60Hz

Power: 850 Watts

## PLEASE READ CAREFULLY AND KEEP FOR FUTURE REFERENCE.

These instructions are designed to help you get a complete understanding of your new Ninja Professional Food Processor.




If you have any questions, please call our Customer Service line at **SG** +65 800 120 5111 or **MY** +60 1800 803 915.

# CONTENTS

<b>Important Safety Instructions.....</b>	<b>4</b>
<b>Parts.....</b>	<b>7</b>
<b>Before First Use .....</b>	<b>8</b>
<b>Features.....</b>	<b>8</b>
Auto-iQ Programs for the Food Processor Bowl.....	8
Manual Programs .....	8
<b>Using the Food Processor Bowl .....</b>	<b>9</b>
<b>Using the Slicing/Grating Disc .....</b>	<b>11</b>
<b>Care &amp; Maintenance.....</b>	<b>13</b>
Cleaning .....	13
Storing.....	13
<b>Troubleshooting Guide.....</b>	<b>14</b>
Resetting the Motor Thermostat .....	14
Ordering Replacement Parts .....	14

# IMPORTANT SAFETY INSTRUCTIONS

PLEASE READ CAREFULLY BEFORE USE • FOR HOUSEHOLD USE ONLY

	<b>Read and review instructions for operation and use.</b>
	<b>Indicates the presence of a hazard that can cause personal injury, death or substantial property damage if the warning included with this symbol is ignored.</b>
	<b>For indoor and household use only.</b>
<b>When using electrical appliances, basic safety precautions should always be followed, including the following:</b>	

## WARNING

**To reduce the risk of injury, fire, electrical shock or property damage, basic safety precautions must always be followed, including the following numbered warnings and subsequent instructions. Do not use appliance for other than intended use.**

- 1 Read all instructions prior to using the appliance and its accessories.
- 2 Carefully observe and follow all warnings and instructions. This unit contains electrical connections and moving parts that potentially present risk to the user.
- 3 Take your time and exercise care during unpacking and appliance setup. This appliance contains sharp, loose blades that can cause injury if mishandled.
- 4 Take inventory of all contents to ensure you have all parts needed to properly and safely operate your appliance.
- 5 Blades are sharp. Handle carefully.
- 6 This product is provided with a Chopping Blade Assembly. **ALWAYS** exercise care when handling blade assembly. The blade assembly is sharp and is **NOT** locked in place in the container. The blade assembly is designed to be removable to facilitate cleaning and replacement if needed. **ONLY** grasp the blade assembly by the top of the shaft. Failure to use care when handling the blade assembly will result in a risk of laceration.
- 7 Turn the appliance **OFF**, then unplug the appliance from the socket when not in use, before assembling or disassembling parts, and before cleaning. To unplug, grasp the plug by the body and pull from the socket. **NEVER** unplug by grasping and pulling the flexible cord.
- 8 Before use, wash all parts that may contact food. Follow washing instructions covered in this instruction manual.
- 9 Before each use, inspect blade assemblies for damage. If a blade is bent or damage is suspected, contact SharkNinja to arrange for replacement.
- 10 **DO NOT** use this appliance outdoors. It is designed for indoor household use only.
- 11 **DO NOT** operate any appliance with a damaged cord or plug, or after the appliance malfunctions or is dropped or damaged in any manner. This appliance has no user-serviceable parts. If damaged, contact Mann&Noble for servicing.
- 12 This appliance has important markings on the plug blade. The entire supply cord is not suitable for replacement. If damaged, please contact Mann&Noble for service.

- 13 Extension cords should **NOT** be used with this appliance.
- 14 To protect against the risk of electric shock, **DO NOT** submerge the appliance or allow the power cord to contact any form of liquid.
- 15 **DO NOT** allow the cord to hang over the edges of tables or worktops. The cord may become snagged and pull the appliance off the work surface.
- 16 **DO NOT** allow the unit or the cord to contact hot surfaces, including stoves and other heating appliances.
- 17 **ALWAYS** use the appliance on a dry and level surface.
- 18 **DO NOT** allow children to operate this appliance or use as a toy. Close supervision is necessary when any appliance is used near children.
- 19 This appliance is **NOT** intended to be used by people with reduced physical, sensory, or mental capabilities, or lack of experience and knowledge, unless they have been given supervision or instruction concerning use of the appliance by a person responsible for their safety.
- 20 **ONLY** use attachments and accessories that are provided with the product or are recommended by SharkNinja. The use of attachments, including canning jars, not recommended or sold by SharkNinja may cause fire, electric shock, or injury.
- 21 **NEVER** place a blade assembly on the motor base without it first being attached to its corresponding container (bowl) and lid.
- 22 Keep hands, hair, and clothing out of the container when loading and operating.
- 23 During operation and handling of the appliance, avoid contact with moving parts.
- 24 **DO NOT** fill containers past the **MAX FILL** or **MAX LIQUID** lines.
- 25 **DO NOT** operate the appliance with an empty container.
- 26 **DO NOT** microwave any containers or accessories provided with the appliance.
- 27 **NEVER** leave the appliance unattended while in use.
- 28 **DO NOT** blend hot liquids. Doing so may result in pressure buildup and steam exposure that can pose a risk of the user being burned.
- 29 **DO NOT** process dry ingredients with the Chopping Blade Assembly.
- 30 To reduce the risk of injury, never place cutting blade or discs on base without first putting bowl properly in place.
- 31 **DO NOT** perform grinding operations with the Chopping Blade Assembly.
- 32 **NEVER** operate the appliance without lids and caps in place. **DO NOT** attempt to defeat the interlock mechanism. Ensure the container and lid are properly installed before operation.
- 33 Before operation, ensure all utensils are removed from containers. Failure to remove utensils can cause containers to shatter and potentially result in personal injury and property damage.
- 34 Keep hands and utensils out of containers while chopping to reduce the risk of severe personal injury or damage to the blender/food chopper. A scraper may be used **ONLY** when the processor is not running. When using the processor, always use food pusher to add food. **NEVER** add food by hand.
- 35 **DO NOT** attempt to remove the container or lid from the motor base while the blade assembly is still spinning. Allow the appliance to come to a complete stop before removing lids and containers.

# IMPORTANT SAFETY INSTRUCTIONS

PLEASE READ CAREFULLY BEFORE USE • FOR HOUSEHOLD USE ONLY

- 36** If the appliance overheats, a thermal switch will activate and temporarily disable the motor. To reset, unplug the appliance and allow it to cool for approximately 30 minutes before using again.
- 37 DO NOT** expose the containers and accessories to extreme temperature changes. They may experience damage.
- 38** Upon completion of processing, ensure that the blade assembly is removed **BEFORE** emptying container's contents. Remove the blade assembly by carefully grasping the top of the shaft and lifting it from the container. Failure to remove the blade assembly before emptying the container results in a risk of laceration.
- 39** The maximum wattage rating for this appliance is based on the configuration of the Food Processor Bowl. Other configurations may draw less power or current.
- 40 DO NOT** submerge the motor base or control panel in water or other liquids. **DO NOT** spray motor base or control panel with any liquid.
- 41 DO NOT** attempt to sharpen blades.
- 42** Turn off the appliance and unplug the motor base before cleaning.
- 43** To reduce the risk of injury from damage to the food processing bowl or separation of the lid, **DO NOT** load the bowl with ice cubes for crushing.

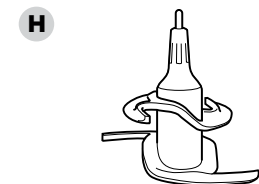
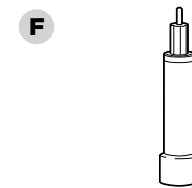
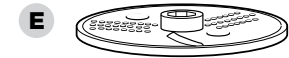
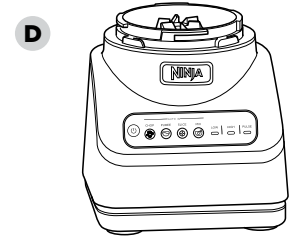
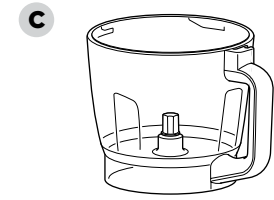
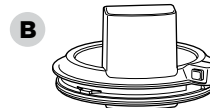
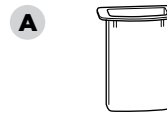
## PARTS

There are a variety of accessories that are compatible with this blender series.

**NOTE:** The top flap of your box shows the select accessories that are included with your model.

To purchase spare parts or additional accessories, visit **SG** [ninjakitchen.sg](http://ninjakitchen.sg) or **MY** [ninjakitchen.my](http://ninjakitchen.my)

- A** Pusher for Feed Chute Lid
- B** Feed Chute Lid
- C** 2.1L Food Processor Bowl
- D** Motor Base  
(attached power cord not shown)
- E** Reversible Slicing/Grating Disc
- F** Disc Adapter
- G** Chopping Blade Assembly
- H** Dough Blade Assembly



## SAVE THESE INSTRUCTIONS


## BEFORE FIRST USE

**IMPORTANT:** Review all warnings on pages 4-6 before proceeding.

**NOTE:** All attachments are BPA free and dishwasher safe. It is recommended that the bowl, lid, disc, and blade assemblies be placed on the top rack of the dishwasher. Exercise care when handling blade assemblies.

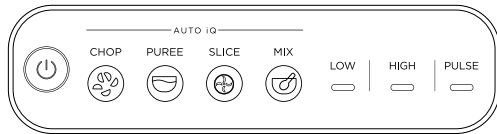
- 1 Remove all packaging materials from the appliance. Exercise care when unpacking blade assemblies. All blade assemblies are sharp.
- 2 The Chopping Blade Assembly is **NOT** locked in place in the bowl. Handle the Chopping Blade Assembly by grasping the top of the shaft.
- 3 Wash bowl, lid, disc, and blade assemblies in warm, soapy, water using a dishwashing utensil with a handle to avoid direct contact with the blades. Exercise care when handling blade assemblies, as the blades are sharp.
- 4 Thoroughly rinse and air-dry all parts.
- 5 Wipe control panel with a soft cloth. Allow it to dry completely before using.

## FEATURES

 The Power button should be used to turn the unit on or off.

### AUTO-iQ

Intelligent preset programs combine unique processing and pausing patterns that do the work for you. Once an Auto-iQ program is selected, it will start immediately and automatically stop when processing is complete. To stop processing before the end of a program, press the currently active button again.



### Auto-iQ PROGRAMS

#### CHOP

Timed pulses and pauses give you consistent chopping results. Run program once for a large chop, twice for a small chop and three times if you prefer it even finer.

#### PUREE

Create anything from silky-smooth sauces to the perfect hummus.

#### SLICE

Use with the reversible disc shaped blade to quickly slice or grate cheese and vegetables with minimal effort.

#### MIX

Quickly mix together doughs and batters for pizzas, bread, pastry and cakes.

### MANUAL PROGRAMS

#### LOW and HIGH

When selected, each of these speeds runs continuously until turned off. They do not work in conjunction with any preset Auto-iQ programs.

#### PULSE

Offers greater control of pulsing and processing. Operates only when PULSE is pressed. Use short presses for short pulses and long presses for long pulses.

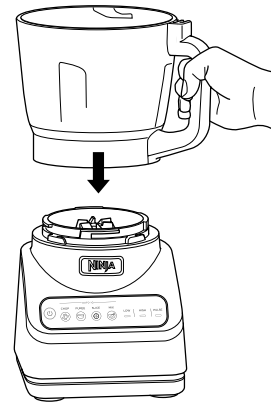
## USING THE FOOD PROCESSOR BOWL

**IMPORTANT:** As a safety feature, if the blade assembly is not fully seated, you will not be able to install and lock the lid in position.

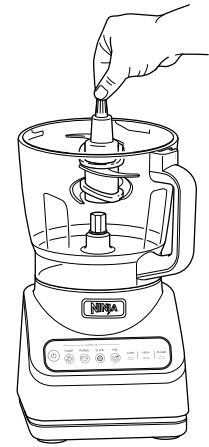
**NOTE: DO NOT** add ingredients before completing installation of the blade assembly.

**NOTE:** Please follow the same instructions to install the Dough Blade Assembly.

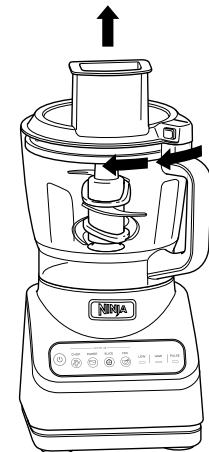
- 1 Place motor base on a clean, dry, level surface such as a worktop or table.



- 2 Lower the Food Processor Bowl onto the motor base and rotate clockwise until it clicks into place.

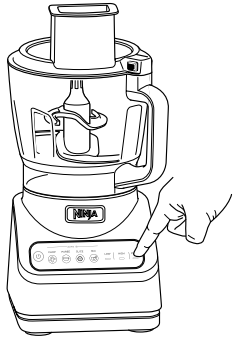


- 3 Exercising care, grasp the Chopping Blade Assembly by the top of the shaft and place it onto the drive gear inside the bowl. Note that the Chopping Blade Assembly will fit loosely on the drive gear.
- 4 Add ingredients to the bowl, making sure not to exceed the MAX FILL line.



- 5 Place the feed chute lid on the bowl and turn clockwise until you hear a click, indicating the lid is locked in place.

## USING THE FOOD PROCESSOR BOWL - CON'T

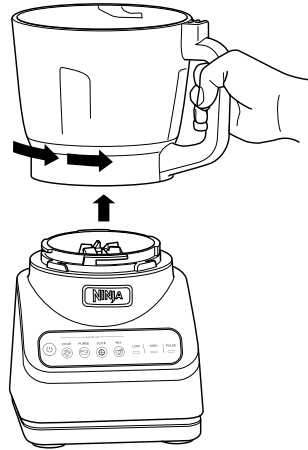


**6a** Plug in the unit, then press the Power button to turn it on. If using an Auto-iQ program, first select the program that best suits your recipe. The preset feature will automatically stop the unit at the end of the program. To stop the unit at any time, press the currently active program again.

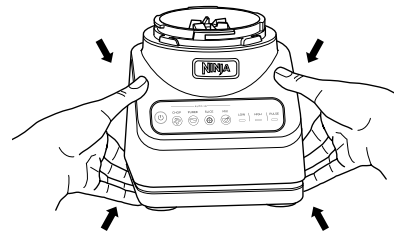
**6b** If not using an Auto-iQ program, select one of the manual programs. Once the ingredients have reached your desired consistency, press the active button again, and wait for the unit to come to a complete stop.



**7** When finished, press the button on the feed chute lid near the handle to unlock, then turn the lid anti-clockwise. Lift the lid from the bowl. Always remove the Chopping Blade Assembly before emptying the ingredients from the bowl. To remove the Chopping Blade Assembly, carefully grasp it by the top of the shaft and lift it out of the bowl.



**8** To remove the bowl from the motor base, turn the bowl anti-clockwise and then lift it.



**9** Press the Power button to turn the unit off, then unplug the unit. Refer to the Care & Maintenance section for cleaning and storage instructions.

## USING THE SLICING/GRATING DISC

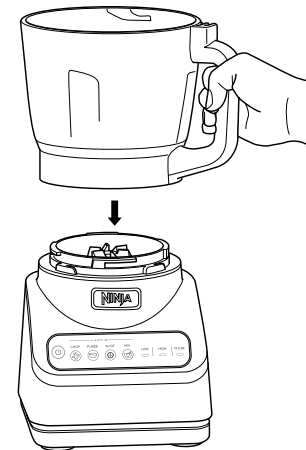
**IMPORTANT:** Review all warnings on pages 4-6 before proceeding.

**IMPORTANT:** Use the SLICE or LOW setting when using the Slicing/Grating Disc.

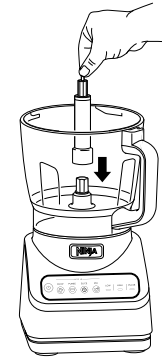
**NOTE:** The feed chute lid features a pusher to guide food through the chute.

**NOTE:** The Slicing/Grating Disc is reversible. Use the side labeled "Slicer" for slicing. Carefully flip the disc over to the side labeled "Shredder" for grating.

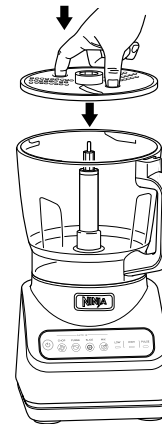
**1** Place motor base and place on a clean, dry, level surface such as a worktop or table.



**2** Lower the Food Processor Bowl onto the motor base and rotate clockwise until it clicks into place.



**3** Place the disc spindle onto the drive gear inside the bowl.



**4** Use the finger holes to grasp the disc and place it over the spindle.



**5** Place the feed chute lid on the bowl and turn clockwise until you hear a click, indicating the lid is locked in place.

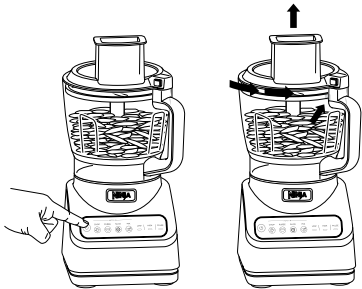
## CARE & MAINTENANCE



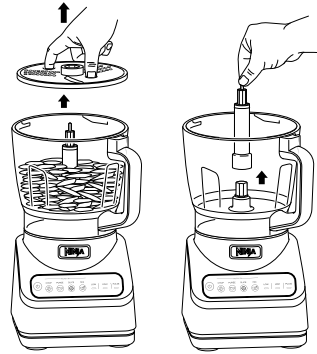
- 6** Plug in the unit, then press the Power button to turn it on. Select LOW. The disc will begin spinning.



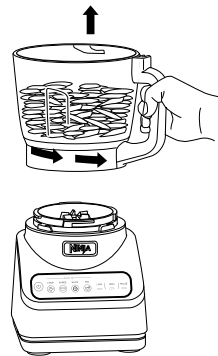
- 7** Add the ingredients you want to slice or grate through the feed chute on the lid. Use the food pusher to help guide the ingredients through the feed chute. The middle piece of the food pusher is removable to use for smaller ingredients.



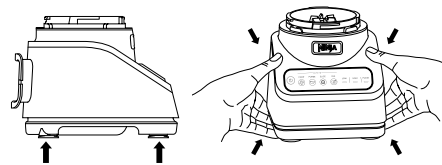
- 8** When finished, stop the unit by touching the Power button and wait for the disc to stop spinning. Press the button on the feed chute lid near the handle to unlock, then turn the lid anti-clockwise. Lift the lid from the bowl.



- 9** Using the finger holes, carefully lift the disc out of the bowl.
- 10** Grasp the spindle by the top of the shaft and lift it out of the bowl.



- 11** To remove the bowl from the motor base, turn the bowl anti-clockwise and then lift it.



- 12** Press the Power button to turn the unit off, then unplug the unit. Refer to the Care & Maintenance section for cleaning and storage instructions.

### CLEANING

Separate all parts. Wash bowl in warm, soapy water with a soft cloth.

#### • Hand-Washing

Wash bowl, lid, disc, and blade assemblies in warm, soapy water. When washing the blade assemblies, use a dishwashing utensil with a handle to avoid direct hand contact with blades.

Handle blade assemblies with care to avoid contact with sharp edges. Rinse and air-dry thoroughly.

#### • Dishwasher

All attachments are dishwasher safe. It is recommended that the bowl, lid, disc, and blade assemblies be placed on the top rack of the dishwasher **ONLY**. Ensure the blade assembly is removed from the bowl before placing in the dishwasher. Exercise care when handling blade assemblies.

#### • Motor Base

Turn off the unit and unplug the motor base before cleaning. Wipe motor base with a clean, damp cloth.

**DO NOT** use abrasive cloths, pads, or brushes to clean the base.

### STORING

Wrap the power cord around the cord wrap on the back of the motor base. Store the unit upright and store all blade assemblies inside or attached to the bowl with the lid locked in place.

**DO NOT** stack items on top of the containers. Store any remaining attachments alongside the unit or in a cabinet where they will not be damaged or create a hazard.

**⚠ WARNING: To reduce the risk of shock and unintended operation, turn power off and unplug unit before troubleshooting.**

## Unit doesn't turn off.

- Remove bowl from base by rotating it anti-clockwise and lifting it. Unplug the power cord from the socket.

## Unit doesn't mix well; ingredients get stuck.

- Using the Auto-iQ programs is the easiest way to achieve great results. The pulses and pauses allow the ingredients to settle toward the blade assembly. If ingredients are routinely getting stuck, adding some liquid will usually help.

## Motor base won't stick to worktop or tabletop.

- Make sure surface and suction feet are wiped clean. Suction feet will only stick to smooth surfaces.
- Suction feet will not stick to some surfaces such as wood, tile, and non-polished finishes.
- **DO NOT** attempt to use unit when the motor base is stuck to a surface that is not secure (chopping board, platter, plates, etc.).

## Unit is difficult to remove from worktop for storage.

- Place your hands underneath both sides of the motor base and gently pull the unit up and toward you.

## Food is not evenly chopped.

- For best results when chopping, cut pieces of ingredients in a uniform size and don't overfill the bowl.

## RESETTING THE MOTOR THERMOSTAT

- This unit features a unique safety system that prevents damage to the motor and drive system should you inadvertently overload the unit. If the unit is overloaded, the motor will be temporarily disabled. Should this occur, follow the reset procedure below.

**1** Unplug the unit from the socket.

**2** Allow the unit to cool for approximately 30 minutes.

**3** Remove the bowl's lid and blade assembly. Empty the bowl and ensure no ingredients are jamming the blade assembly.

**IMPORTANT:** Ensure that maximum capacities are not exceeded. This is the most typical cause of appliance overload.

## ORDERING REPLACEMENT PARTS

To order additional parts and attachments, visit **SG** [ninjakitchen.sg](http://ninjakitchen.sg) or **MY** [ninjakitchen.my](http://ninjakitchen.my)

## ONE (1) YEAR LIMITED REPLACEMENT WARRANTY

The warranty commences on the date of purchase and expires at the end of the 1 year period. In the unlikely event of a defect due to faulty materials or workmanship within the guarantee period we will replace the defective/faulty part with a new product, free of charge, or if the unit is deemed defective/faulty we replace the unit with an equivalent or upgraded model, at our discretion.

For warranty claims, you will need to submit a proof of purchase in the form of a valid receipt that displays date and place of purchase.

Replacement items will be covered by the limited warranty for the balance of the warranty period from the date of the original purchase. Please note:

### Your warranty is subject to the following conditions:

- **DO NOT** operate the appliance with a damaged plug or cord, or if the unit has been dropped, damaged or dropped in water.
- To avoid the risk of electric shock, do not disassemble or attempt to repair the appliance on your own. If the supply cord is damaged, it must be replaced by a qualified electrician to avoid a hazard. Incorrect re-assembly or repair can cause a risk of electric shock or injury to persons when the appliance is used.
- The item has not been misused, abused, neglected, altered, modified or repaired by anyone.
- The item has been subjected to fair wear and tear.
- The item has not been used for trade, professional or hire purposes.
- The item has not sustained damage through foreign objects, substances or accident
- Accidental damage
- Damage as a result of use not in accordance with the rating plate
- Use of parts and accessories that are not genuine Ninja components

### Customer costs within warranty

- The customer is responsible for any inwards freight charge to return a product for warranty if requested, and outward freight charge for warranty parts and or replacement unit.

### Who is covered?

- This warranty applies only to the original purchaser, who bought the product from an authorised retailer and may not be transferred. Proof of purchase is required.

### What is not covered?

- Accessories supplied with the item.
- Components that are subject to natural wear and tear caused by normal use in accordance with operating instructions.
- Unauthorised/improper maintenance/handling or overload is excluded from this warranty.





# Mann&Noble

## **Proudly distributed by**

Mann&Noble Asia Pte Ltd  
600 North Bridge Road, #23-01  
Parkview Singapore 188778

SG +65 800 120 5111  
MY +60 1800 803 915

## **Visit us at:**

**SG** [ninjakitchen.sg](http://ninjakitchen.sg)  
**MY** [ninjakitchen.my](http://ninjakitchen.my)

---

**NOTE:** Please keep these instructions for future use.

---

Illustrations may differ from actual product. We are constantly striving to improve our products, therefore the specifications contained herein are subject to change without notice.

NINJA is a trademark of SharkNinja Operating LLC.

© 2020 SharkNinja Operating LLC

PRINTED IN CHINA

BN650SM\_IB\_MP\_MV1

